

PCR陽性

如果你是**確診者**

通報學校

上班時間 -

(02) 2826-7212 (陽明校區)
(03) 5731906 (交大校區)

下班/假日 -

(02) 2826-1100 (陽明校區)
0972705757 (交大校區)

填寫
確診者
疫調單

校方將聯絡確診者，請確診者填寫**確診者疫調單**

人在校內

住宿生**聯絡家人接回**，
或自行開車、騎車返家

人在校外

居住地居家隔離

特殊情形，請聯絡衛保組或校安中心

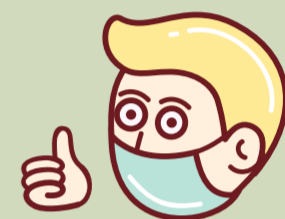
通知
密切接觸者

告知可能的密切接觸者，需注意自身健康狀況。

如果你是**密切接觸者**

做好
個人防護

若被校方或確診者通知可能為”密切接觸者”
做好個人防護，避免到人多的場合
也可主動向衛保組、校安中心聯絡



校方
聯絡關懷

確認接觸史，填寫**密切接觸者表單**

確實填寫居家隔離地點、個人聯絡電話等...

校方安排快篩 或 自行快篩，並回報結果

確認為密切接觸者

本地生
返家隔離

校方開立**配合居家隔離通知書**

人在校內

住宿生聯絡家人接回，
或自行開車、騎車返家

人在校外

居住地居家隔離

特殊情形，請聯絡衛保組或校安中心

PCR positive
If you are

confirmed

as COVID-19 case...

Reporting

Report that you are tested PCR positive.

Working hours -

(02) 2826-7212 (Yang Ming Campus)

(03) 573-1906 (Chiao Tung Campus)

Off-duty time -

(02) 2826-1000 (Yang Ming Campus)

0972-705-757 (Chiao Tung Campus)

You may also contact the OIA or your department for assistance.

Fill the form

The school authorities will contact you and ask you to fill out the **contact tracing form**.

According to the rules, you will be moved to a **quarantine space**.

Inform

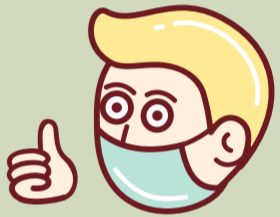
Tell your close contacts that you are PCR positive. Suggest your close contacts to be aware of possible symptoms.

If you are a

close contact

Self
protection

If you are informed to be a close contact, please put on a mask and avoid going to crowded areas. You can also contact the school authorities.



Contact
and care

The school authorities will contact you and ask you to fill out the form for close contact.

Please perform a rapid test arranged by the school or self bought, then report the result to the school authorities.

confirmed as a close contact

Quarantine

A formal notification of corporate quarantine will be sent to you.

You will be officially informed and moved to a quarantine space.